



(JODA Lägesställare)



JD 1 M – Positioner Joda 1 manual:

- Max load capacity 200 Kg
- Moment of flexion 40 kgm
- Moment of torsion 12 kgm
- Thru-hole Ø25 mm
- Table Ø500 mm with 4 radial slot milling
- DC gearmotor with tako
- Rotation speed from 0,1 to 4 rpm, others on demand
- Continuous tilting movement from 0 to 135°
- Foot switch

JD 1 PLC – Automatic positioner controlled by PLC:

- Max load capacity 200 Kg
- Moment of flexion 40 kgm
- Moment of torsion 12 kgm
- Thru-hole Ø25 mm
- Table Ø500 mm with 4 radial slot milling
- DC gearmotor with encoder
- Rotation speed from 0,1 to 4 rpm, others on demand
- Continuous tilting movement from 0 to 135°
- Work cycle: lowering pneumatic slide, arc on, table delay, 360° more adjustable overlap, arc off, retract of pneumatic slide, return to zero of table.
- Current sensor for ok to move

JD 1 CN – Joda 1 with NC control (software not included)



JD 1-100 Position with the following features:

- Max load: 100 Kg
- Moment of flexion: 20 Kgm
- Moment of torsion: 8 Kgm
- Table Ø 350 mm
- Continuous manual inclination: from 0 to -135°
- **Thru-hole Ø100 mm**
- Rotating mass 400 A
- Dc motor with tako
- speed from 0,2 to 4 rpm
- Start delay, overlap, return to 0, TIG-MIG selection.
- The arm, chuck and pneumatic slide are not included



JD 5 M – Positioner Joda 5 manual:

- Max load capacity 500 Kg
- Moment of flexion 200 kgm
- Moment of torsion 100 kgm
- Thru-hole Ø200 mm
- Table Ø750 mm with 4 radial slot milling
- DC gearmotor with tako
- Rotation speed from 0,1 to 2 rpm, others on demand
- Continous motorized tilting movement from 0 to 135°
- Pendant with 7 mt cable



JD 8 M – Positioner Joda 8 manual:

- Max load capacity 800 Kg
- Moment of flexion 310 kgm
- Moment of torsion 124 kgm
- Table Ø 900 mm with 4 radial slot milling
- Brushless gearmotor with encoder
- Rotation speed from 0,1 to 1,3 rpm, others on demand
- Continous motorized tilting movement from 0 to 135°
- Pendant with 7 mt cable



JD 20 M – Positioner Joda 20 manual:

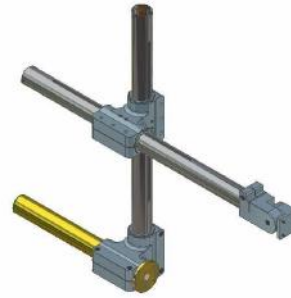
- Max load capacity 2000 Kg
- Moment of flexion 510 kgm
- Moment of torsion 200 kgm
- Table Ø1200 mm with 4 radial slot milling
- AC gearmotor with inverter
- Rotation speed from 0,1 to 1 rpm, others on demand
- Continous motorized tilting movement from 0 to 135°
- Pendant with 7 mt cable

Svetsteknik 
 - det kompletta svetshuset

AB Svetsteknik • Södra Långebergsgatan 18 • 421 32 Västra Frölunda • Tel 031-28 90 90 • Fax 031-748 52 01

JD BB – Torch holder arm without hand-wheels:

- 3 tubes Ø60
- 2 aluminum cross tubes holder
- Two axis aluminum support for motorized or manual slides
- Max load capacity 20 Kg



JD BV – Torch holder arm with hand-wheels

- 3 tubes Ø60
- 2 aluminum cross tubes holder
- Two axis aluminum support for motorized or manual slides
- Max load capacity 20 Kg
- Useful stroke for horizontal and vertical axis 450 mm
- Mouvement with hand-wheels and position display



JD PNEUMO – Pneumatic slide for torch holder arm

- Structure in machined aluminium
- Inductive limit switches
- Linear ball bearing guide
- Protection bellows
- Pneumatic line with pressure reduction, electro-valve, filter....

stroke 80 mm

stroke 180 mm



JODA Horizontal – Turning table with fixed horizontal axe:

- Table Ø500 with 4 radial slot milling
- Max load capacity 300 Kg
- Ground contact 400 A
- AC motor with inverter control
- Rotation from 0,1 to 2 rpm
- Power line 230 V 50-60 Hz
- standard cycle: Start delay, overlap, return to 0, TIG-MIG selection



Svetsteknik 
- det kompletta svetshuset

AB Svetsteknik • Södra Långebergsgatan 18 • 421 32 Västra Frölunda • Tel 031-28 90 90 • Fax 031-748 52 01

www.svetsteknik.se

JD BF – JODA Bi-Face – Tavola rotante con inclinazione a 180°

- Max load capacity: 300 Kg
- Ø table 750 mm with hole Ø200 mm
- Rotating ground 400 A
- Speed rotation from 0,1 to 2 rpm, other on demand
- Motorized tilting movement from -90° to +90°
- Moment of flexion 120 Kgm
- Moment of torsion 100 Kgm
- cycle with: star delay, overlap, return to 0, TIG-MIG selection



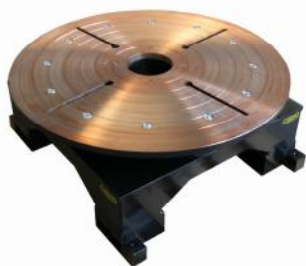
CHK 100 – Chuck with Ø100 hole

- low profile and light
- reversible jaws
- fast tightening without key
- 3 jaws at 120°
- steel C40 machined



CHK 200 – Chuck with Ø200 hole

- low profile and light
- reversible jaws
- fast tightening without key
- 3 jaws at 120°
- steel C40 machined for all parts



JODA PLANO 25 – Turning table 2500 Kg:

- Table Ø 900 with thru-hole and with 4 radial slot milling
- Ground contact 400 A
- Iron worked and painted structure
- AC motorgear controlled by inverter
- Speed rotation from 0,1 to 1 rpm, other on demand
- Power line 230 V 50-60 Hz (on demand 380 V)
- Pendant with speed control, start delay and overlap timer

Svetsteknik 
- det kompletta svetshuset

AB Svetsteknik • Södra Långebergsgatan 18 • 421 32 Västra Frölunda • Tel 031-28 90 90 • Fax 031-748 52 01

JODA PLANO 50 –Turning table 5000 Kg:

- Table Ø 1200 with thru-hole and with 4 radial slot milling
- Ground contact 400 A



- Iron worked and painted structure
- AC motorgear controlled by inverter
- Speed rotation from 0,1 to 1 rpm, other on demand
- Power line 230 V 50-60 Hz (on demand 380 V)

Pendant with speed control, start delay and overlap timer

-
The radius are not included

IPTR ROTATORS

(Rullbockar)

IPTR – Lifting idler rotator:

- Max load capacity: 1000 Kg
- Ø of vessel: from 250 to 1250 mm
- 2 rolls in Vulkollan



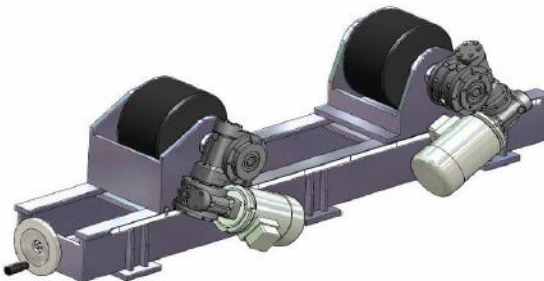
IPTR2 – 2 t Rotator, power + idler:

- Max load capacity: 2000 Kg (power +idler)
- Rubber rolls Ø250 mm, width 100 mm
- interaxe movement of rolls with holes at 150 mm
- Powered unit with 2 AC motors of 90 W each, controlled by inverter
- Box control
- Pendant with: speed, forward/reverse and Stop



IPTR5 – 5t Rotator, power + idler:

- Max load capacity: 2000 Kg (power +idler)
- Rubber rolls Ø250 mm, width 150 mm
- interaxe movement of rolls with manual screw right/left
- Powered unit with 2 AC motors of 0,18 Kw each, controlled by inverter
- Box control
- Pendant with: speed, forward/reverse and Stop



Svetsteknik

- det kompletta svetshuset

AB Svetsteknik • Södra Långebergsgatan 18 • 421 32 Västra Frölunda • Tel 031-28 90 90 • Fax 031-748 52 01

www.svetsteknik.se